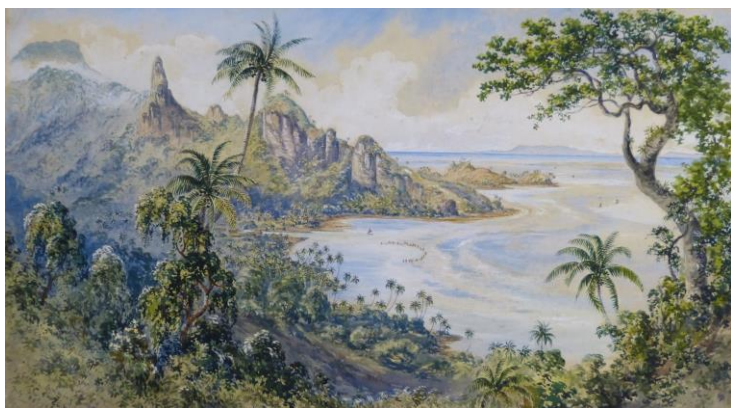


**Fiji: Art and Life in the Pacific**

The Sainsbury Centre for Visual Arts at the University of East Anglia, Norwich, 15 October 2016 - 12 February 2017

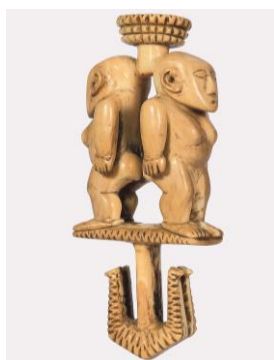
Selection of images available. Contact [pr@pipparoberts.com](mailto:pr@pipparoberts.com)



Constance Gordon Cumming, *View of Tokou, Ovalau*, 1870s watercolour (Museum of Archaeology & Anthropology, Cambridge)



Priest's dish for *yaqona* (kava) in duck form with pedestal stand (Sainsbury Collection, SCVA)



Whale ivory double-figure hook (Kings Museum, Aberdeen)



Wood headrest with whale ivory inlay (MAA, Cambridge)



*Right:* Club in figural form (British Museum)



Large decorated pot (MAA, Cambridge)



Plaited leaf basket (MAA, Cambridge)



Painted & stencilled barkcloth, detail (Maidstone Museum & Bently Art Gallery)



Plaited Fan (MAA, Cambridge)



James Glen Wilson, *Feejeeans Resting*, 1856  
watercolour & ink (Private Collection)



Ratu Epenisa Seru Cakobau  
paramount chief of Bau



Model temple, coir basketry  
& wood (MAA, Cambridge)



Royal club, inlaid with whale ivory, presented by Ratu Cakobau, paramount chief of Bau, to Governor Sir Arthur Gordon, c. 1875-76  
(Private Collection)



Whale ivory necklace  
(MAA, Cambridge)



Breastplate, whale ivory  
& fibre (Fiji Museum)



Club with flaring head form  
(Maidstone Museum & Bentlif Art Gallery)



Pedestal dish used by priests for drinking  
*yaqona* (kava) (MAA, Cambridge)



Man-shaped dish for *yaqona* (kava)  
(Fiji Museum)



Engraved bamboo nose flute (Maidstone Museum & Bentlif Art Gallery)